

# Daymap Connect

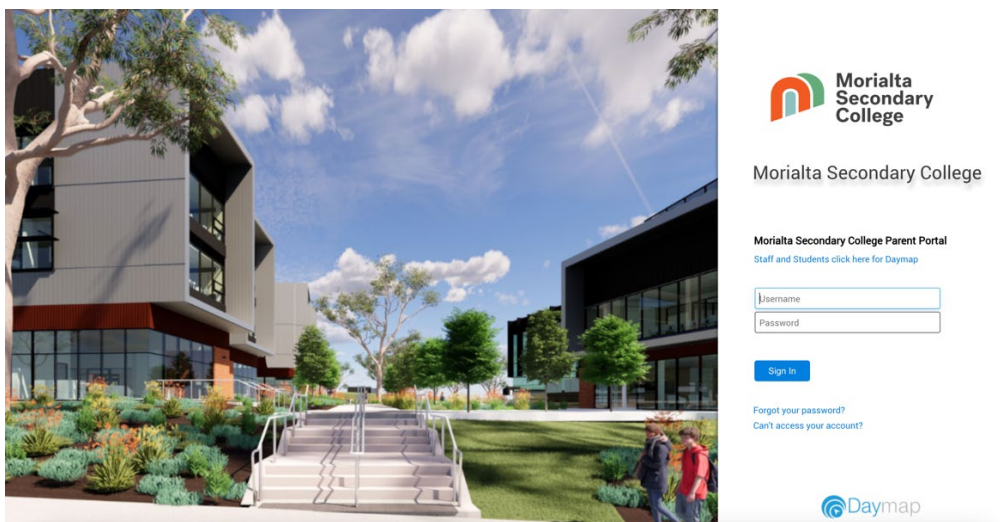
## Accessing the Parent Portal

In 2026 Morialta Secondary College will continue to use the Daymap Learning Management System (LMS). Daymap Connect is an extension of the Daymap LMS used by students and staff within the school context. It is a Parent Portal and combines communication and student management, by providing parents and caregivers with access to key school and student information on their child's learning behaviour, progress and performance.

## Accessing Daymap Connect

Daymap Connect can be accessed using a login and password per parent (with the option to provide multiple logins). The easy-to-use system allows parents to access details for all their children enrolled in the school, anywhere and anytime.

The Daymap Connect log in screen is shown below. This can be found by following this link <https://morialtasecondarycollege.daymap.net/daymapConnect/> or accessing via the school webpage.



You will need to select 'Forgot your password?' and you will be redirected to a password reset page. You will need to enter your email address that is registered at the school as well as the student code provided to you.

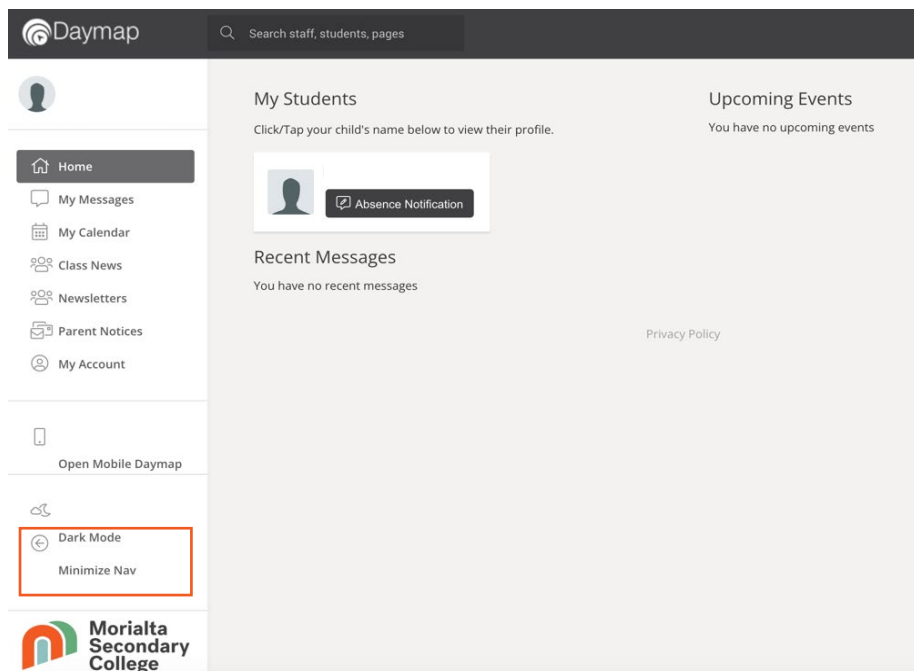
Enter the email address you have registered with the school along with a matching valid student code. A link to set your password will be emailed to you.

Email	<input type="text"/>
Student Code	<input type="text"/>
<input type="button" value="Reset Password"/>	

**Note:** Due to security reasons, Daymap is unable to assist if there is an issue with accessing your account. For assistance, please contact the college.

# Daymap Connect

Daymap Connect is navigated via the tabs on the left side of the window to view messages, a calendar of events, school notices and account details.



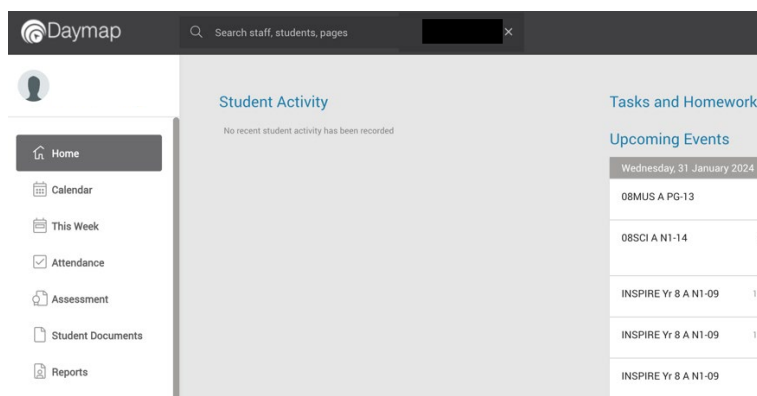
Daymap Connect can be used in dark mode or light mode. Click on the icon to toggle between modes. The navigator on the left-hand side of the screen can be maximized or minimized using the **Minimize Nav** button.

## Student Profile

From the Daymap Connect home tab, you can click on a child's name to view their student profile which provides more detailed information on their attendance, assessment and details. This assists you to keep track of your child's progress at school.

## Home

The Home Tab displays a snapshot of student activity tasks and homework and any upcoming events. Student Activity is listed in chronological order; the school determines the types of information they will include here. All tasks and homework are shown with the set and due date. Upcoming events displays your child's timetable for the upcoming week.



## Calendar

This shows a weekly calendar view of the student timetable and any additional events (this may include excursions or whole school activities). Use the checkboxes on the right to filter the items you view when looking at the calendar. The buttons on top of the calendar allow you to change your view from week to month or day.

## This Week

This shows your child's timetable and attendance for the week at a glance and in real time. This tab also displays any Assessment Tasks and Homework for the week. Clicking on the homework or task will allow you to view all information and any attachments added.

The screenshot shows the Daymap interface. At the top, there is a search bar with the text "Search staff, students, pages" and a user profile icon. Below the search bar is a navigation menu with options: Home, Calendar, This Week (selected), Attendance, Assessment, Student Documents, and Reports. The main content area displays a weekly timetable for the week starting on 04/02/2024. The timetable is organized into a table with columns for each day of the week (Mon 5/2, Tue 6/2, Wed 7/2, Thu 8/2, Fri 9/2) and rows for each period (Period 1 to Period 6). The classes listed are: Period 1 (08FOD A, 08SCI A, 08MUS A, 08ITL A, 08ENG A), Period 2 (08CON A, 08MAT A, 08SCI A, 08ART A, 08MUS A), Recess, Period 3 (08ART A, 08HAS A, INSPIRE Yr 8 A, 08FOD A, 08HAS A), Period 4 (08ENG A, 08ITL A, INSPIRE Yr 8 A, 08MAT A, 08SCI A), Lunch 1, Lunch 2, Period 5 (08MAT A, 08ENG A, INSPIRE Yr 8 A, 08CON A, 08MAT A), and Period 6 (08HAS A, 08HPE A, 08ENG A, 08HPE A). Below the timetable, there is a legend for symbols: a blue checkmark for "Marked as present", a blue X for "Marked as absent, approved", a red X for "Marked as absent, unapproved", a red L for "Marked as late", and a blue circle with a white dot for "Roll has not been marked".

## Attendance

This displays a colour coded Attendance Map, as well as Attendance Rates for the student for each individual class across the school year. Clicking on a particular class under Attendance Rates will show you the reasons for the absences.

## Assessment

This provides an overview of your child's assessment. You will also see tabs for current tasks, completed tasks and the assessment schedule. This information can be filtered to a specific class using the drop-down menu at the top.

### Progress

This tab shows your child's progress in each subject.

### Current

This tab shows current assessment information. Clicking on a task will allow you to see all relevant information and attachments.

## Reports

The reports tab allows you to download and view academic reports for your child. At Morialta Secondary College we report twice yearly at the end of each semester. At this time, your will be advised that reports have been published.