



**Morialta
Secondary
College**

Uniform Policy (Dress Code)



Morialta Secondary College

Always flowing. Ever forward. Belong, achieve, become

Rationale

The school dress code is the documented standard of what's acceptable in relation to the clothing worn by students while attending Morialta Secondary College.

The college's uniform plays an important role in promoting a positive image of the college and creating a sense of identify among students and the community.

The design concept for the college reflects the strong links to the local community and environment. The orange visualises the contemporary design and vibrancy of the college, while the green and blue represents the native flora and flowing water of Morialta.

Arrangements for 2023

As an establishing school, the 2023 dress code has been developed by the principal in conference with a consultation committee. The committee included a selection of parents and students from neighbouring schools.

When reviewing this dress code, the committee considered the selection of items to ensure they are:

- appropriate for all weather conditions and personal needs, including fabric or material choice
- inclusive of a diverse student body, including gender expression, disability, religion and cultural considerations
- supportive, positive, non-discriminatory, equitable and provides a safe environment for all students.

In term 1 2023, formal support of the dress code will be sought by the functioning governing council elected at the college's first annual general meeting.

Following, the principal with the new governing council, will commence a formal review, including consultation with our new school community to consider the final design elements of the uniform and any additional factors that may affect families. The review will comply with all requirements in the department's school dress code administrative instructions.

Non-Compliance

The college may enforce this dress code and may take appropriate disciplinary action in relation to intentional and persistent breach of the code.

Matters relating to new and second-hand uniform purchase, financial hardship, exemptions, or non-compliance must be raised with the college's leadership team for consideration.

Families can contact the college at dl.1920.info@schools.sa.edu.au for further information.



UNIFORM SELECTION

All uniform selections available have been designed to be gender neutral and are available in various styles, sizing and can be worn during any season as appropriate for weather conditions and personal needs.

Short sleeve shirt	White with logo
Long sleeve shirt	White with logo
Tailored shorts	Tailored, charcoal grey, with logo on side pocket
Tailored pants	Tailored, charcoal grey, with logo on side pocket
Knitted sweater	Light stone grey, woollen, logo, orange trim
Blazer	Charcoal grey, logo on pocket, orange trim
Tie	Charcoal grey, plaid - MSC design (orange and light stone grey)
Pleated skirt	Charcoal grey, plaid - MSC design (orange and light stone grey)
Dress	Light stone grey, plaid -MSC design (charcoal grey and orange), white collar with logo, white cuffs
Soft-shell jacket	Charcoal grey chest and sleeves, light stone grey body, orange trim and logo
PE polo shirt	Charcoal grey with orange side panels and collar, white piping, white logo and "Morialta" on back
PE short	Charcoal grey with orange logo
PE track pant	Charcoal grey with orange logo
Socks	Black or white crew socks
Tights	Black
Cap	Charcoal grey with orange logo
Bucket hat	Charcoal grey with orange logo
Beanie	Charcoal grey with orange logo
Scarf	Charcoal grey with orange logo
Shoes	Black, polishable lace up school shoes
Headscarves	Black, white or grey



UNISEX SHORT SLEEVE SHIRT
MIDFORD | WHITE | LOGOS EMBROIDERY
NOTES: SIDE SPLIT, STRAIGHT HEM



UNISEX LONG SLEEVE SHIRT
MIDFORD | WHITE | LOGOS EMBROIDERY
NOTES: SIDE SPLIT, STRAIGHT HEM



KNITTED SWEATER
CUSTOM KNIT | LOGOS EMBROIDERY
FABRIC: POLY COTTON
ORANGE S BATCH 161
GREY 024 BATCH 258



BLAZERS
LOGOS EMBROIDERY



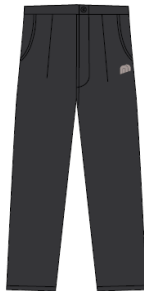
TIES
CUSTOM DESIGNS



TAILORED SHORTS
MIDFORD | DARK GREY | LOGOS EMBROIDERY



TAILORED TROUSERS
MIDFORD | DARK GREY | LOGOS EMBROIDERY
DIFFERENT CUTS AVAILABLE



TIGHTS
BLACK | NO LOGOS



PLEATED WINTER SKIRT
CUSTOM CHECK | NO LOGOS



SUMMER DRESS
CUSTOM CHECK | LOGO EMBROIDERY



NEW GYM POLO
P7 | CUT & SEW
PMS 1026 C PMS 447 C WHITE



NEW SOFTSHELL JACKET
CUSTOM P7 | LOGOS EMBROIDERY



AH800 SCARF
CHARCOAL
LOGO EMBROIDERY



P757 GYM SHORTS
CHARCOAL STRETCH MICROFIBRE
LOGO EMBROIDERY



P664 GYM PANTS
CHARCOAL STRETCH MICROFIBRE
LOGO EMBROIDERY



4148 CAP
CHARCOAL | LOGO EMBROIDERY



CHPB1 POM POM BEANIE
CUSTOM DESIGN | LOGO EMBROIDERY



FRONT

AT-CREW SOCK
Black sock
5mm orange stripe



AT-CREW SOCK
White sock
5mm charcoal stripe



4223 BUCKET HAT
CHARCOAL | LOGO EMBROIDERY



BACK



DRESS CODE

Formal Occasions

When representing the college on formal occasions, the college's white shirt must be worn with the pleated skirt or tailored trousers/shorts and knitted sweater (optional). The college's dress may also be worn formally on its own or with the knitted sweater.

Physical Education (PE) Uniform

The college's PE uniform consists of a gym polo shirt and gym shorts/pants and can be worn only on days a student has PE lessons, sporting events and other occasions as designated appropriate by the college.

*Additional specialist sport uniforms required for some sports will be supplied by the college.

Jewellery

- Minimal jewellery may be worn (watches are allowed)
- Earrings: Sleepers or unobtrusive studs in ears
- No other visible body or face piercings are permitted

*Medic alert jewellery is exempted. Please see exemptions for any other items of cultural or religious significance.

Make-up

- Minimal make-up only may be worn
- Minimal alterations to natural hair colour

Senior Students Uniform

Options for senior secondary students will be developed in consultation with students in coming years, as enrolments progressively grow.

Exemptions

Families may seek exemption from school dress code for a variety of reasons, including, but not limited to religious, cultural and ethnic reasons.

Families must provide a written request to the principal outlining the reasons for the exemption. Requests for exemption can be submitted via email to dl.1920.info@schools.sa.edu.au

UNIFORM PURCHASE

Uniform items are available for purchase from Belgravia Sports – JS Sports Uniform Shop – Campbelltown at 10 Newton Road, Campbelltown and will be available online through the college's website.

Shoes will need to be purchased from retailers. Socks and tights also available through the uniform shop or can be purchased from retailers.

In the future, second hand uniform purchases may be available through the college, or private purchase not managed by the college or uniform supplier.

Families with financial hardships can contact the college to discuss payment options. Students will not be disadvantaged.

Last updated 8 August 2022

Next review date August 2024



