



**Morialta  
Secondary  
College**

## **Uniform Policy (Dress Code)**



# Morialta Secondary College

## College Vision

Our vision is captured by the following guiding statements:

### College Motto

Ever Forward

### College Pillars

Belong, Achieve, Become

Our behaviour expectations align with our College pillars:

#### Belong

We are kind and respectful

#### Achieve

We strive for growth and our personal best

#### Become

We build Community.

## Purpose

The college's uniform has been designed to meet the needs of a 7-12 Secondary College with a formal uniform and PE uniform.

The design concept for the college reflects the strong links to the local community and environment. The orange visualises the contemporary design and vibrancy of the college, while the green and blue represents the native flora and flowing water of Morialta.

The school dress code is the documented standard of what's acceptable in relation to the clothing worn by students while attending Morialta Secondary College.

The college's uniform plays an important role in promoting a positive image of the college and creating a sense of identify among students and the community. It promotes pride in presentation, supports equity and allows staff to provide care to students who are immediately recognisable as Morialta Secondary College students. Our uniform enables us to 'Build Community' through high standards of presentation and pride in our community.

The College's uniform is deliberately aspirational. It is designed to enable our students to represent the College with pride at any range of activities from formal events through to active events through sport or the performing arts.



## Uniform Items

All uniform selections are available in various sizes.

Items can be worn during any season as appropriate for weather conditions and personal needs. All students require formal uniform option/s and PE uniform option/s.

Short sleeve shirt	White with logo
Long sleeve shirt	White with logo
Tailored shorts	Tailored, charcoal grey, with logo on side pocket Length to the knee
Tailored pants	Tailored, charcoal grey, with logo on side pocket
Knitted sweater	Light stone grey, woollen, logo, orange trim
Blazer	Charcoal grey, logo on pocket, orange trim
Tie	Charcoal grey, plaid - MSC design (orange and light stone grey)
Pleated skirt	Charcoal grey, plaid - MSC design Length to or below the knee)
Dress	Light stone grey, plaid -MSC design (charcoal grey and orange), white collar with logo, white cuffs Length to or below the knee
Dress (long sleeve)	Long sleeve light stone grey, plaid -MSC design (charcoal grey and orange), white collar with logo, white cuffs Length to or below the knee
Soft-shell jacket	Charcoal grey chest and sleeves, light stone grey body, orange trim and logo
PE polo shirt	Charcoal grey with orange side panels and collar, white piping, white logo and "Morialta" on back
PE Polo shirt (long sleeve)	Long sleeve charcoal grey with orange side panels and collar, white piping, white logo and "Morialta" on back.
PE short	Charcoal grey with orange logo Length to the knee
PE track pant	Charcoal grey with orange logo
Socks	Black or white crew socks
Tights	Black
Cap	Charcoal grey with orange logo
Bucket hat	Charcoal grey with orange logo
Beanie	Charcoal grey with orange logo
Scarf	Charcoal grey with orange logo
Shoes	Black, polishable lace up school shoes
Headscarves	Black, white or grey
Backpack	Morialta Secondary College backpack



**UNISEX SHORT SLEEVE SHIRT**  
MIDFORD | WHITE | LOGOS EMBROIDERY  
NOTES: SIDE SPLIT, STRAIGHT HEM



**UNISEX LONG SLEEVE SHIRT**  
MIDFORD | WHITE | LOGOS EMBROIDERY  
NOTES: SIDE SPLIT, STRAIGHT HEM



**KNITTED SWEATER**  
CUSTOM KNIT | LOGOS EMBROIDERY  
FABRIC: POLY COTTON  
ORANGE S BATCH 161  
GREY 024 BATCH 258



**BLAZERS**  
LOGOS EMBROIDERY



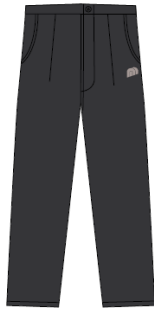
**TIES**  
CUSTOM DESIGNS



**TAILORED SHORTS**  
MIDFORD | DARK GREY | LOGOS EMBROIDERY



**TAILORED TROUSERS**  
MIDFORD | DARK GREY | LOGOS EMBROIDERY  
**DIFFERENT CUTS AVAILABLE**



**TIGHTS**  
BLACK | NO LOGOS



**PLEATED WINTER SKIRT**  
CUSTOM CHECK | NO LOGOS



**SUMMER DRESS**  
CUSTOM CHECK | LOGO EMBROIDERY



**NEW GYM POLO**  
P7 | CUT & SEW  
PHS 190S C PHS 447 C WHITE



**NEW SOFTSHELL JACKET**  
CUSTOM P7 | LOGOS EMBROIDERY



**AH800 SCARF**  
CHARCOAL  
LOGO EMBROIDERY



**P757 GYM SHORTS**  
CHARCOAL STRETCH MICROFIBRE  
LOGO EMBROIDERY



**P664 GYM PANTS**  
CHARCOAL STRETCH MICROFIBRE  
LOGO EMBROIDERY



**4148 CAP**  
CHARCOAL | LOGO EMBROIDERY



**CHP81 POM POM BEANIE**  
CUSTOM DESIGN | LOGO EMBROIDERY



**AT-CREW SOCK**  
Black sock  
5mm orange stripe



**AT-CREW SOCK**  
White sock  
5mm charcoal stripe



**4223 BUCKET HAT**  
CHARCOAL | LOGO EMBROIDERY



**'NEW STYLE' UNISEX POLO**  
FABRIC(S): COTTON BACK  
LOGO(S): EMB  
SUPPLIER: HS



# DRESS CODE

## Formal Uniform

When representing the college on formal occasions, the college's white shirt must be worn with the pleated skirt or tailored trousers/shorts and knitted sweater (optional). The college's dress may also be worn formally on its own or with the knitted sweater.

## Physical Education (PE) Uniform

The college's PE uniform consists of a gym polo shirt (short or long sleeve) and gym shorts/pants and can be worn only on days a student has PE lessons, sporting events and other occasions as designated appropriate by the college.

\*Additional specialist sport uniforms required for some sports will be supplied by the college.

## Jewellery

Discrete jewellery that ensures the personal safety of our students is acceptable. The college understands that jewellery of cultural significance is important to some students, and these can be worn under the college uniform provided that they are not visible.

Acceptable jewellery items include:

- Earrings: Sleepers or unobtrusive studs in ears
- Medic alert jewellery
- Watches (no wearable technology with mobile sim card access)

Unacceptable items include:

- No other visible body or face piercings are permitted
- No earrings larger than sleepers or studs due to workplace safety

\*Medic alert jewellery is exempted. Please see exemptions for any other items of cultural or religious significance.

## Make-up

Discrete make-up may only be worn.

Hair dyed an unnatural colour is discouraged as we are preparing students for professional expectations.

## Hats (refer to Sun Smart Policy)

We acknowledge that excessive exposure to sun can cause long term health issues. For this reason, Morialta Secondary College has included hats within our dress code. Students are encouraged to wear hats when outdoors and when participating in outdoor sport. Sunscreen is made available throughout the college. When inside, hats are to be not to be worn in class.

## Miscellaneous

Additional clothing items worn under the uniform must not be visible.  
Pants, shorts, skirts, and shorts are not to be rolled up.

## Senior Students Uniform

Options for senior secondary students will be developed in consultation with students in coming years, as enrolments progressively grow.



## **Exemptions**

Families may seek exemption from school dress code for a variety of reasons, including, but not limited to religious, cultural and ethnic reasons.

Families must provide a written request to the principal outlining the reasons for the exemption. Requests for exemption can be submitted via email to [dl.1920.info@schools.sa.edu.au](mailto:dl.1920.info@schools.sa.edu.au)

## **Non-Compliance**

The college may enforce this dress code and may take appropriate disciplinary action in relation to intentional and persistent breach of the code.

Matters relating to new and second-hand uniform purchase, financial hardship, exemptions, or non-compliance must be raised with the college's leadership team for consideration.

Families can contact the college at [dl.1920.info@schools.sa.edu.au](mailto:dl.1920.info@schools.sa.edu.au) for further information.

## **Uniform Purchase**

Uniform items are available for purchase from Belgravia Sports – JS Sports Uniform Shop – Campbelltown at 10 Newton Road, Campbelltown and will be available online through the college's website.

School shoes will need to be purchased from retailers. Socks and tights also available through the uniform shop or can be purchased from retailers.

In the future, second hand uniform purchases may be available through the uniform shop, or private purchase not managed by the college or uniform supplier.

Families with financial hardships can contact the college to discuss payment options. Students will not be disadvantaged.

Last updated June 2024

